

MESA, AZ: TOP OF THE CLASS

With a population of nearly 500,000 Mesa, Arizona is the 38th largest city in the United States and second largest in the Phoenix-Mesa Metro area. Larger than Miami, Minneapolis, Atlanta and St. Louis, Mesa covers 133 square miles inside a 21-city region with a population of 4 million, projected to be 6.3 million by 2030. Add to that proximity and access to California, Colorado, Utah, New Mexico and Nevada, the market expands to a population of 56 million with a gross product of \$2.1 trillion which ranks 8th internationally.

EDUCATION

MESA: RECRUITING HIGHER EDUCATION

MESA IS COMMITTED TO EXPANDING AND ATTRACTING HIGHER EDUCATION PROJECTS THAT CREATE HIGH WAGE JOBS.

HIGHER EDUCATION: AREA OF OPPORTUNITY

The City's economic development priorities are guided by Mesa's targeted industries of opportunity: Healthcare, Education, Aerospace and Tourism. Propelled by Mesa's strengths, quality infrastructure, talented workforce, projected growth and global market trends, the City of Mesa is already realizing significant achievements in each industry space.

Commitment to Quality and Desire to Succeed

Increasing educational opportunities and attainment for young adults and adults returning to college is a top priority for the City of Mesa. To achieve that goal, Mesa City Council is committed to expanding and attracting higher education and to developing quality projects that create high-wage jobs.

The City of Mesa owns thousands of acres of land, new development and redevelopment sites and buildings inside and outside City limits. Several sites in Downtown Mesa are available for projects in, or related to, Mesa's higher education initiatives. In fact, Mesa competes aggressively for projects that fit well in the downtown area and generate positive economic impact. With the addition of Metro Light Rail, the new Mesa Arts Center, the remodeled Mesa Convention Center and more than \$500 million in planned investments in the next five years, Downtown Mesa is an attractive destination for students, faculty, businesses and residents.

Mesa's Light Rail is Enhancing the Downtown Core

The arrival of METRO Light Rail in late 2008 ushered in a new era of transportation to Greater Phoenix. Recently, Mesa City Council approved a three-mile rail extension with four station locations in Downtown Mesa. Construction begins in 2013 and will be completed in 2016.

City Utilities

The City of Mesa owns and operates the water, wastewater, electric, gas, and trash utilities within Downtown Mesa and is willing to discuss attractive utility service plans for educational facilities in the downtown.





OUTSTANDING SCHOOLS

The City of Mesa has a strong reputation for providing a well-educated, thoroughly trained workforce. In addition to the City's public and private K-12 schools, including a K-9 Montessori school, a variety of post-secondary schools offer an array of career training choices and levels of expertise.

K-12 SYSTEM – A STRONG FOUNDATION

Mesa Public Schools (MPS) is the largest school district in Arizona and the 44th largest in the country. MPS is recognized nationally for its superb educational programs and student achievements in academics, sports, creative and performing arts, as well as technical and career training. Mesa boasts a new biotech academy and an advanced health sciences academy.

- Mesa Public Schools conducts an Annual Senior Survey. 3,401 seniors responded in Spring 2010. Results indicate:
 - 94 percent plan further education with 85 percent planning to attend college immediately after high school. Of those, 69 percent indicated they planned to attend school full-time.
 - 79 percent plan to attend an Arizona school.
 - 71 percent plan on obtaining a four-year BA/BS degree.
 - 40 percent plan on obtaining a graduate degree.
- For the past three years, America's Promise Alliance named Mesa Public Schools as No. 1 in graduation rates among the nation's 50 largest cities. MPS' four-year graduation rate is 81 percent. (Source: AZ Department of Education)
- U.S. News & World Report listed five MPS high schools in its 2010 report on America's best high schools.
- MPS graduates were offered more than \$53 million in scholarships last year.
- Mesa Public Schools, the nation's 44th largest district with 66,500 students, was identified as one of only 21 districts that "beats the odds" by exceeding expected graduation rates by at least 10 percent.

(Source: Education Week magazine, June 10, 2010, Diploma Counts 2010: Graduation by the Numbers)



MESA BY THE NUMBERS

POPULATION

Population	Year 2010	2015 Projection
Mesa	462,286	507,373
Arizona	6,747,261	7,518,953

Population Growth

	Mesa	Arizona
2010-2015	9.75%	11.4%
2000-2010	16.6%	31.5%
1990-2000	35.5%	40%

Population by Age

Age	Year 2010		2015 Projection	
	Mesa	Arizona	Mesa	Arizona
15-17	18,287	277,583	20,513	302,221
18-20	18,123	274,601	20,580	303,736
21-24	23,764	347,831	25,463	383,401
25-34	69,401	946,302	65,727	976,548

Number of Households in Mesa

Year 2010	2015 Projection
167,260	182,266

DEMOGRAPHICS

Median Age	34
Average Household Income	\$67,285
2008 Effective Buying Income	\$8.684 billion

(Source: Sales and Marketing, Survey of Buying Power)

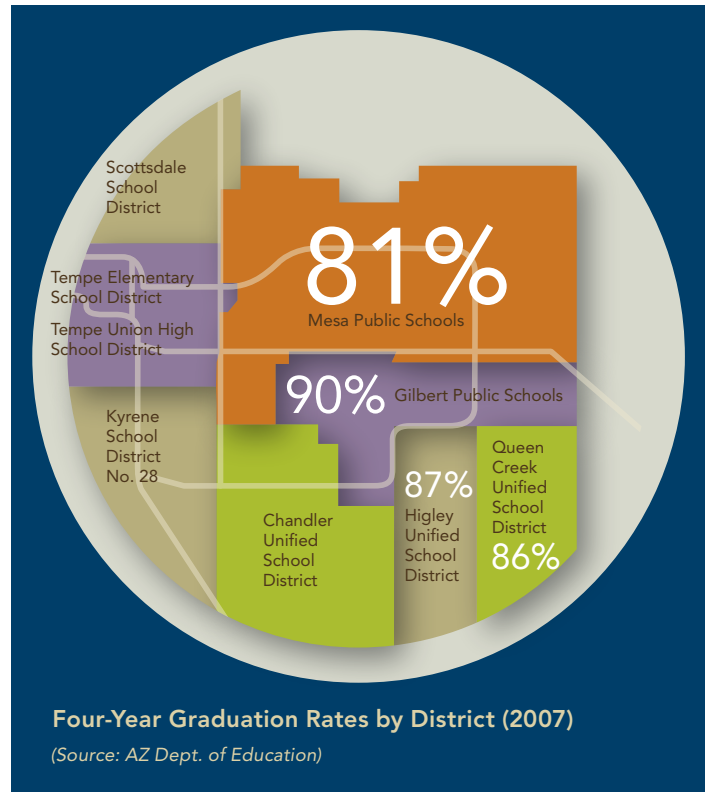
2010 Estimated Population in Mesa - Age 25+ by Educational Attainment

	Mesa
Doctorate Degree	2,160
Professional School Degree	3,866
Master's Degree	17,077
Bachelor's Degree	46,609
Associate Degree	24,900

(Source: Claritas, 2010 unless otherwise noted)

Four-Year Graduation Rates (2007):

Arizona	68.2%
U.S.	68.8%



Gilbert Public Schools (GPS) is one of four districts covering a portion of Mesa and the first in Arizona to acquire the national pre-engineering program Project Lead the Way (PLTW). The program will be offered at Desert Ridge High School in East Mesa. With its commitment to recruit and retain all students, PLTW offers a flexible and rigorous high school four-year program that recognizes students' college-preparatory math and science sequences and their career goals. PLTW prepares students to enter a two- or four-year college or technical school in engineering and engineering technology.

East Valley Institute of Technology (EVIT) is considered a model for career and technical education by the U.S. Department of Education. EVIT provides students with hands-on, advanced skills and training in over 40 occupation-specific programs which allow students to thrive in today's competitive job market. EVIT is Arizona's first Joint Technological Education District (JTED), a public school district that serves students from 10 East Valley school districts.

UNIVERSITIES

A.T. Still University (ATSU) – Certificates, Master’s, Doctorates

Founded in 1892 as the nation’s first college of osteopathic medicine, A.T. Still University provides graduate level education in whole person healthcare. Recognized internationally for its integrated approach, ATSU equips students with the knowledge, compassion and hands-on experience needed to address the body, mind and spirit. The University now comprises the Arizona School of Dentistry & Oral Health, the Arizona School of Health Sciences and the School of Osteopathic Medicine in Arizona on its 59-acre Mesa campus; and the Kirksville College of Osteopathic Medicine and the School of Health Management in Missouri. More than 2,800 students are enrolled at ATSU’s Mesa campus and university-wide. International students enhance diversity with more than 183 students from 14 countries enrolled in ATSU’s 23 programs. In 2009, ATSU awarded more than 1,000 post-graduate degrees (730 Doctorates, 301 Masters).

ATSU doctorate-level degree programs in Arizona:

- Audiology
- Dental Medicine
- Osteopathic Medicine
- Physical Therapy
- Doctor of Health Sciences
- Doctor of Health Education
- Transitional Doctor of Audiology
- Transitional Doctor of Physical Therapy



Arizona State University Polytechnic (ASU Poly) – Bachelor’s, Master’s, Doctorates

ASU Poly campus is located on 600 acres adjacent to Phoenix Mesa Gateway Airport. The Mesa campus is home to more than 10,000 students exploring ASU’s professional and technological programs with 80 undergraduate degrees and 22 graduate degrees. More than 85 buildings (office, classroom and laboratory space) offer students and faculty a dynamic campus environment.

ASU Poly offers programs in aviation, healthcare, business, education, engineering, math, science and technology, complemented by arts, humanities and social sciences curricula.

High-Tech Assets at ASU Poly

ASU is recognized for innovative partnerships and creative collaborations with industry and other educational institutions. Assets include state-of-the-art infrastructure, research capabilities and student and faculty in key areas.

Healthcare / Biosciences

- Applied Biological Sciences students have access to state-of-the-art greenhouses and the Laboratory for Algae Research and Biotechnology, where researchers are converting algae into biofuels and food supplements, using algae in water remediation and to reduce carbon dioxide.
- A Clean Room Laboratory supports a variety of research, from the Center for Innovation in medicine-to-wafer fabrication tools, integrated electronic systems, electronics packaging and testing equipment and inspection equipment.
- Pre-veterinary students attend classes in a Veterinary Teaching Theater.
- A PING Swing Analysis Lab provides Professional Golf Management students with the technology to analyze their swing and help improve their golf skills and game.



Unique research at ASU Poly includes the work of scientists Milton Sommerfeld and Qiang Hu and their conversion of algae feedstock to fuel. Sommerfeld and Hu were among a select group chosen as nominees for a 2009 World Technology Award by the World Technology Network (WTN), and Time magazine selected the researchers’ work as one of the best innovations for 2008.

Aerospace / Aviation / Manufacturing

- Full-motion CAE flight simulators and training devices help Professional Flight students prepare for careers.
- The Ottosen Air Traffic Control Simulation Lab provides Air Traffic Management students with simulators similar to the ones used at the FAA's Air Traffic Control (ATC) Academy in Oklahoma City. The simulator is the only one in a higher education setting that has the control tower and radar simulation systems interfaced.
- The Del E. Webb Altitude Chamber Lab allows students to experience the physiological effect that oxygen deprivation has on the body.
- Haas Technical Center is equipped with the tools that Mechanical and Manufacturing Engineering students use to design and build prototypes for the aerospace, automotive and manufacturing industries.
- A Fuel Cell Laboratory provides Electronics Engineering students with a hands-on environment where they can design and build more efficient hydrogen fuel cells.

High Tech / Information Technology

- The I3DEA Laboratory provides Computer Science students with a focus on imaging and 3-Dimensional (3D) data like face authentication and handwriting analysis. The research lab has several federally funded projects.
- The Laboratory for Enterprise Application Development (LEAD) promotes applied research, teaching and industry outreach in the areas of distributed and Web-based applications, software engineering and opensource software.



COMMUNITY COLLEGES

Mesa Community College (MCC) - Certificates, Associates

MCC is the largest Community College in the State of Arizona with over 40,000 students annually. MCC offers more than 150 Degrees and Certificates in technical and career tracks and prepares students to transfer to a university. Students pursue coursework at two comprehensive Mesa campuses: MCC at Southern and Dobson and MCC at Red Mountain. MCC also offers coursework in Downtown Mesa where Northern Arizona University shares space and students. Additional learning sites include Banner Boswell, Phoenix-Mesa Gateway, as well as online classes.

The campus life enriches student learning in the areas of community service, leadership and interpersonal skills. Clubs and organizations include student government, Phi Theta Kappa, Model UN, art exhibits and MCC's award-winning student newspaper, Mesa Legend. The athletics program has been nationally recognized for excellence and is a member of the Arizona Community College Athletic Conference and the National Junior College Athletic Association.

Chandler-Gilbert Community College (CGCC) - Certificates, Associates

Founded in 1985, CGCC is in Chandler and Mesa, and serves the needs of residents at three locations in the Southeast Valley with university transfer and workforce development programs, continuing education and more. CGCC's service area reflects a diverse multicultural environment and is experiencing burgeoning population growth.

Recent accomplishments include opening new programs in engineering, teacher education, sustainability and ecological literacy, dietetics and nutrition, law enforcement, fire science, electric utility technology, biotechnology and nursing, while expanding existing programs in aviation, healthcare, business, computers, humanities, arts and sciences. CGCC currently serves more than 16,000 students annually, employs 320 people full-time, 125 full-time faculty and has an operational budget of \$37.9 million.



ARTS AND CULTURE COMPLEMENT EDUCATION

Mesa Arts Center is the largest arts center in Arizona and the only center offering comprehensive professional performing arts, visual arts and arts education programming on one state-of-the-art campus. The MAC is a one-of-a-kind asset for higher education institutions interested in partnering on a variety of programs such as collocation of performance space, workshop collaborations, special events or graduations.

The Campus

- Three buildings located on seven acres; 212,775-square-feet.
- Theaters Complex: four theaters ranging from 1,600 seats to 99-seat "black box", supporting spaces for the theaters plus 17 dressing rooms, back of house and technical support spaces.
- Mesa Contemporary Arts: Exhibition space in five galleries, meeting space, lecture hall and lobby atrium.
- Art Studios: 14 visual and performing arts studios and classrooms - ceramics, printmaking, glass, jewelry, sculpture, multimedia, children's/multipurpose, drama, dance, music studios, and more.

Theaters Showcase Local Performing Arts Companies

- "Home" Venue for Mesa companies: Ballet Etudes, East Valley Children's Theatre, Mesa Encore Theatre, Metropolitan Youth Symphony, Southwest Shakespeare Company, Symphony of the Southwest and Xico, Inc.



Annual attendance at the MAC is 290,000. More than 2.3 million people live within a 30-minute drive of the MAC, projected to be 2.6 million by 2015.





City of Mesa
Office of Economic Development
20 E Main, Suite 200
PO Box 1466
Mesa, Arizona 85211-1466

480.644.2398 (tel)
480.650.MESA
480.644.3458 (fax)
econdev.info@mesaaz.gov
www.mesaaz.gov/economic

EMPOWERED TO HELP YOU BUILD YOUR BUSINESS

The City of Mesa Office of Economic Development works closely with the client throughout all phases of the development process and looks forward to helping you build and grow higher education in Mesa.