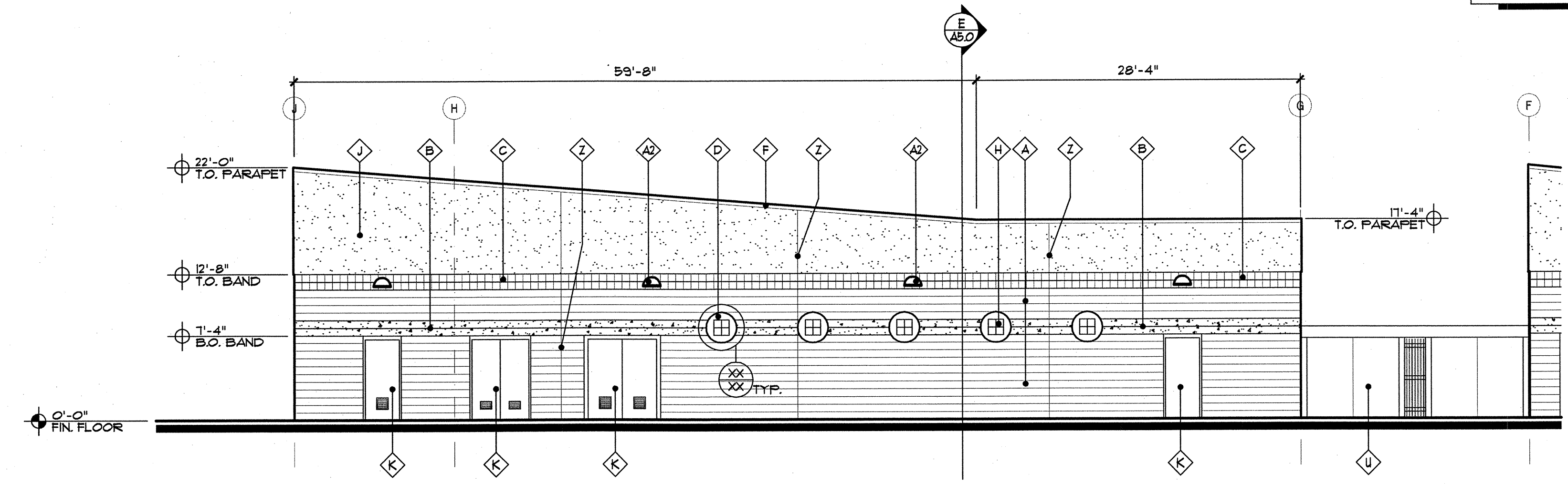


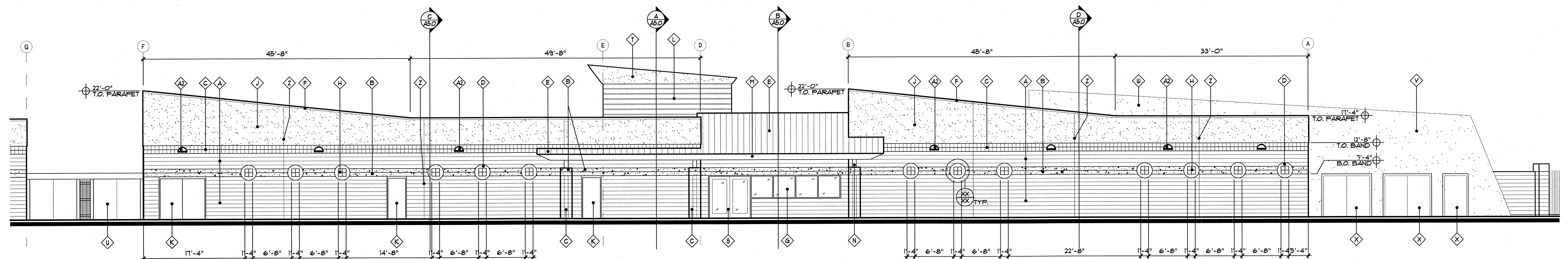
NOTE:  
 ALL ROOF MOUNTED MECHANICAL EQUIPMENT LOCATED ON ROOF AND WILL BE SCREENED BY PARAFET WALLS

NOTE:  
 ALL HEIGHTS ARE GIVEN RELATIVE TO FINISH FLOOR OF 0'-0"

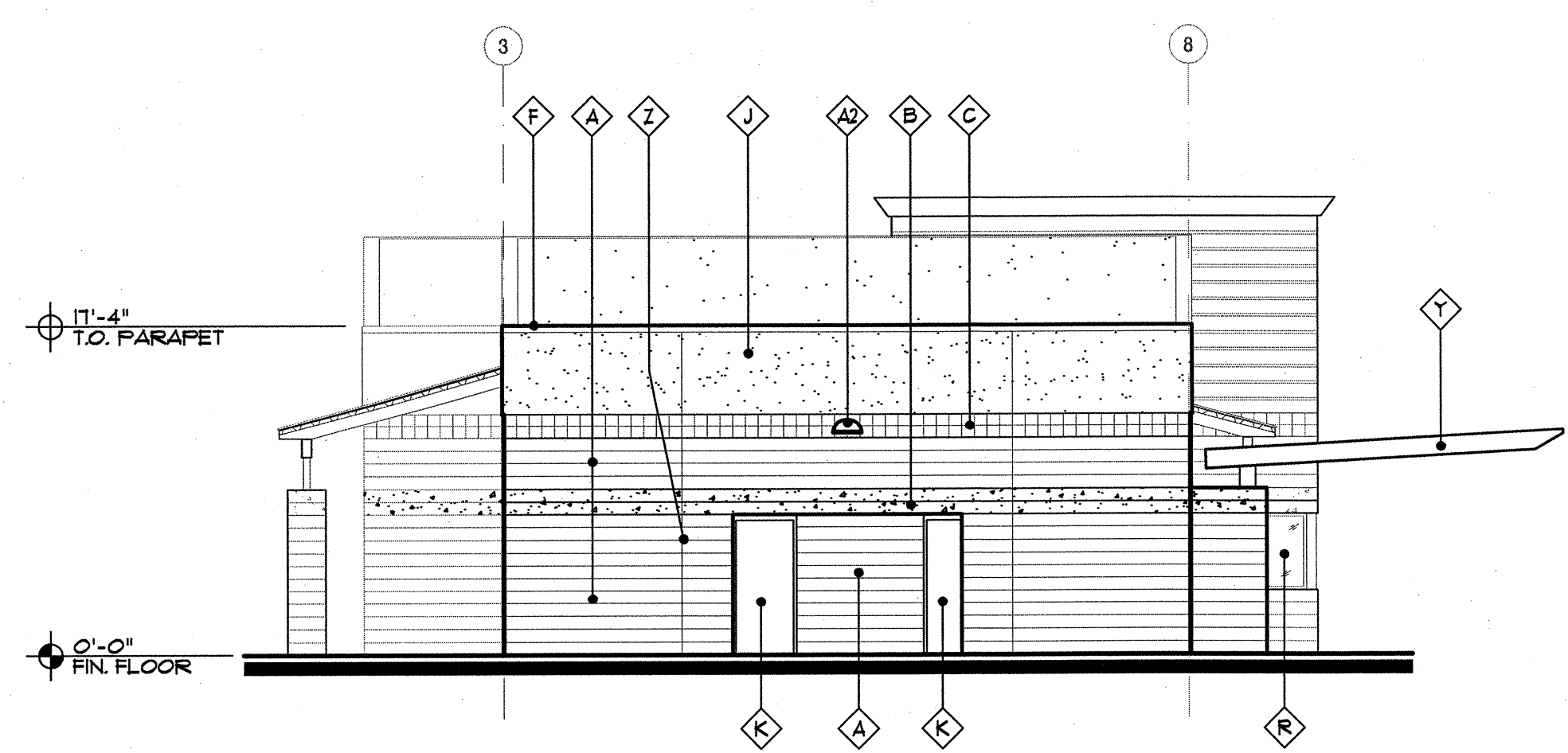
- COLORS/MATERIALS:**
- MASONRY**
- A CMU #1: 8x8x16 SPLIT FACE CMU COLOR: PAINT/STAIN TO MATCH INTEGRAL COLOR CMU "CHARCOAL"
  - B CMU #2: 8x8x16 GROUND FACE CMU - COLOR: MALIBU SAND
  - C CMU #3: 8x8x16 CENTER SCORE CMU COLOR: PAINT/STAIN TO MATCH INTEGRAL COLOR CMU "CHARCOAL"
  - D CMU #4: 8x8x16 PLAIN CMU WITH CEMENT PLASTER SMOOTH FINISH - COLOR: DE 5555 THE BLUES
  - E STANDING SEAM METAL ROOF SYSTEM - SATIN FINISH GALVALUME
  - F GALVANIZED METAL COPING: NO PAINT
  - G CLEAR ANODIZED ALUMINUM STOREFRONT SYSTEM WITH INSULATED GLASS SYSTEM GLASS COLOR: MATCH LOF "BLUE GREEN"
  - H GLASS BLOCK 8"x8"
  - I CEMENT PLASTER FINISH OVER PLAIN CMU, SMOOTH FINISH - COLOR: DE 5263 SONORA SHADE
  - J HOLLOW METAL DOOR # FRAME, PAINT - COLOR: PAINT TO MATCH
  - K METAL WALL SYSTEM CENTRIA CS-210 COLOR: MATCH "CENTRIA" AGED COPPER
  - L TUBE STEEL BEAM, PAINT - COLOR: DE 5090 POMEGRANATE
  - M TUBE STEEL COLUMN, PAINT - COLOR: DE 5090 POMEGRANATE
  - N TUBE STEEL FRAME PAINT - COLOR: DE 5090 POMEGRANATE
  - O PERFORATED METAL SUN SCREEN POWDER COAT PAINT FINISH COLOR: DE 5416 CANDLE FLAME
  - P SILICONE BUTT GLAZED WINDOW SYSTEM WITH INSULATED GLASS
  - Q CLEAR ANODIZED ALUMINUM STOREFRONT DOOR SYSTEM
  - R EIFS CORNICE/CAP - COLOR: DE CANDLE FLAME
  - S HOLLOW METAL DOOR # T.S. FRAME, PAINT COLOR: DE 5263 SONORA SHADE
  - T CEMENT PLASTER FINISH OVER PLAIN CMU, SMOOTH FINISH - COLOR: DE 6182 BEAUMONT BROWN
  - U CEMENT PLASTER FINISH OVER PARTITION STUD WALL
  - V HOLLOW METAL DOOR # FRAME, PAINT COLOR: DE 5263 SONORA SHADE
  - W TUBE STEEL SHADE STRUCTURE
  - X MASONRY CONTROL JOINT
  - Y CLEAR ANODIZED ALUMINUM LOUVER
  - Z EXTERIOR WALL MOUNTED LIGHT FIXTURE



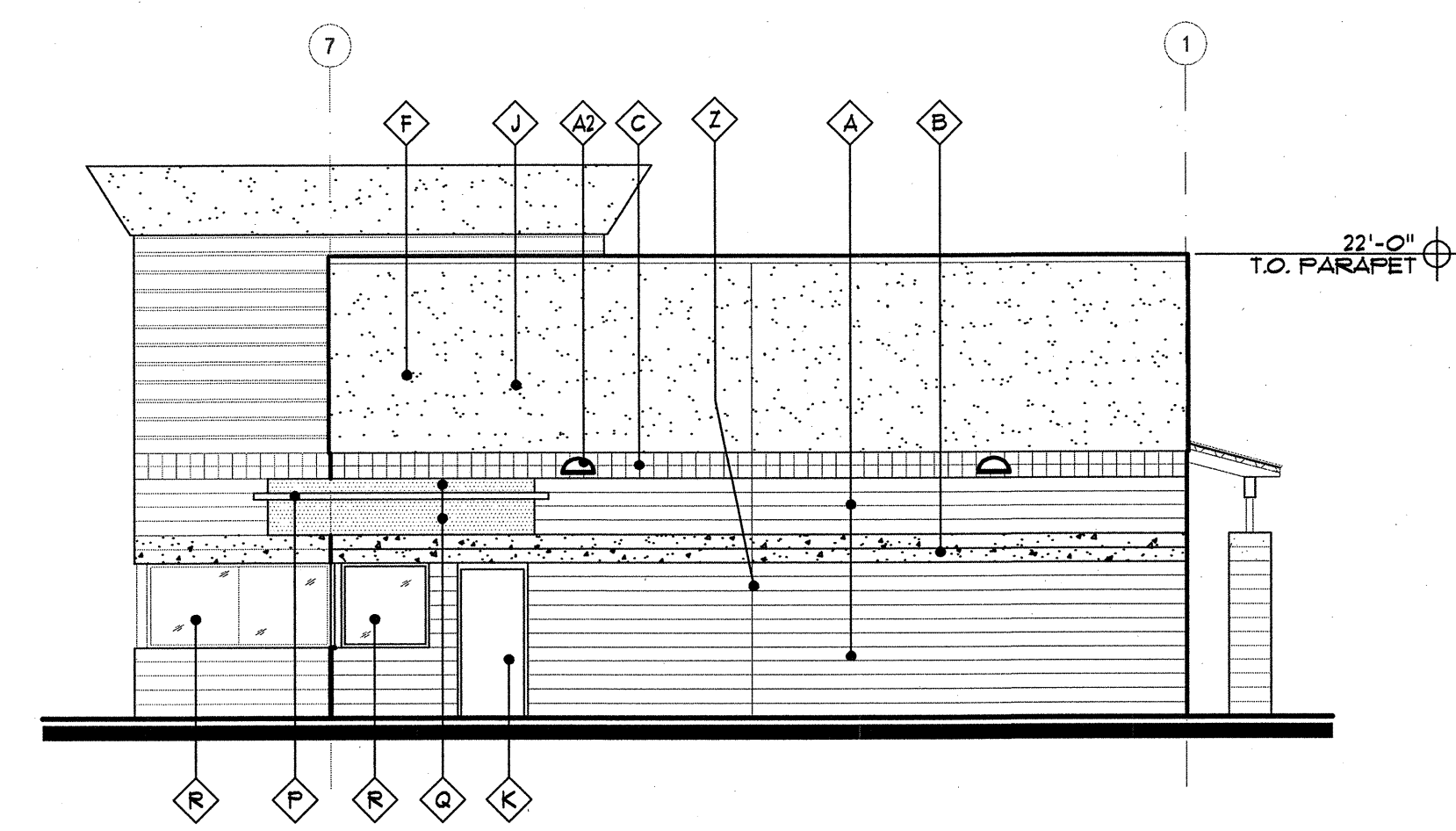
**NORTH ELEVATION BLDG B**  
 SCALE: 1/8" = 1'-0"



**NORTH ELEVATION BLDG A**  
 SCALE: 1/8" = 1'-0"



**WEST ELEVATION BLDG A**  
 SCALE: 1/8" = 1'-0"



**EAST ELEVATION BLDG A**  
 SCALE: 1/8" = 1'-0"

W:\0826\CD\A3.1.dwg 05.13.09 12:22pm R\Whitbeck

 CALL TWO WORKING DAYS BEFORE YOU SEE US AT BLUE STAR CENTER 602-263-1100 OR 811 INSIDE MARICOPA COUNTY	<b>Saemisch + Di Bella</b> ARCHITECTS INC. 48 West Main Street Suite 200 Mesa, Arizona 85201 480-655-0633v 480-655-0632f www.sdarch.com		
	SDA JOB NO. 0826		
PRELIMINARY NOT FOR CONSTRUCTION OR RECORDING	CITY OF MESA ENGINEERING DEPARTMENT <b>SKYLINE AQUATIC CENTER</b> 845 South Grisman Road Mesa, Arizona 85208		
	Exterior Elevations	<b>A3.1</b>	
DRAWN BY: R. Whitbeck ARCHITECT: V. DiBella APPROVED BY:	SHEET OF	CATALOG NUMBER <b>A-</b>	
340 W.O. 4254 PROJ. NO. 07-0333-001			