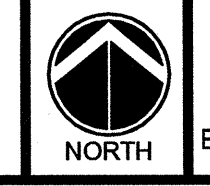


SCALE: 1/8" = 1'-0"



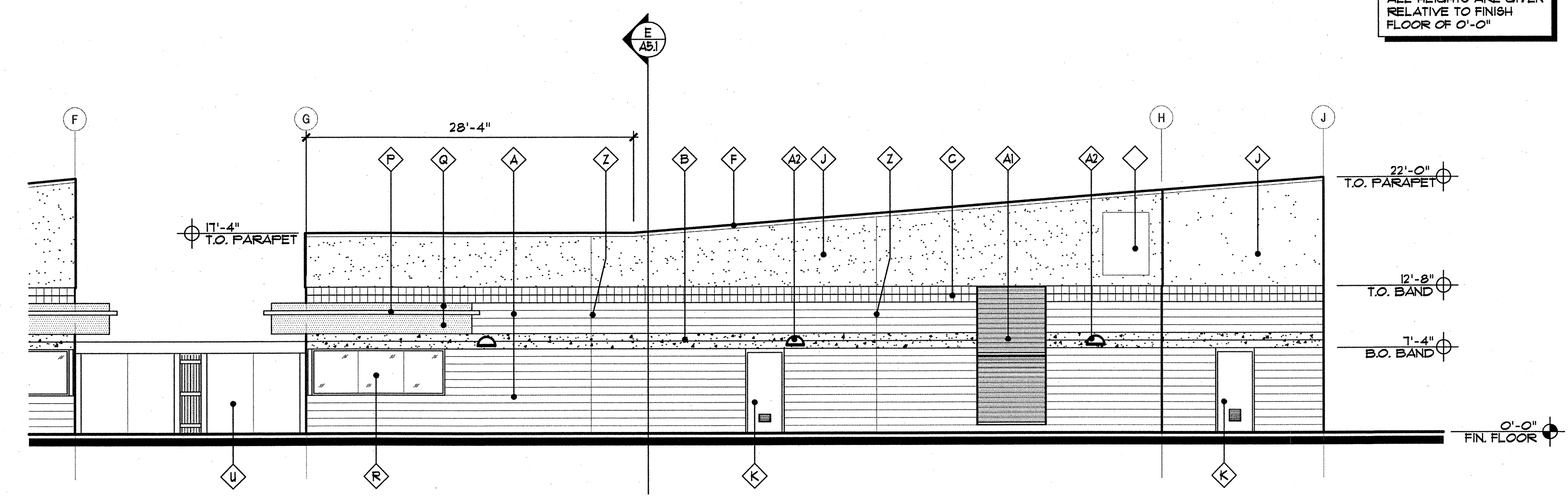
BENCHMARK:
ELEVATION= (CITY OF MESA DATUM)

NOTE:
ALL ROOF MOUNTED MECHANICAL EQUIPMENT LOCATED ON ROOF AND WILL BE SCREENED BY PARAPET WALLS.

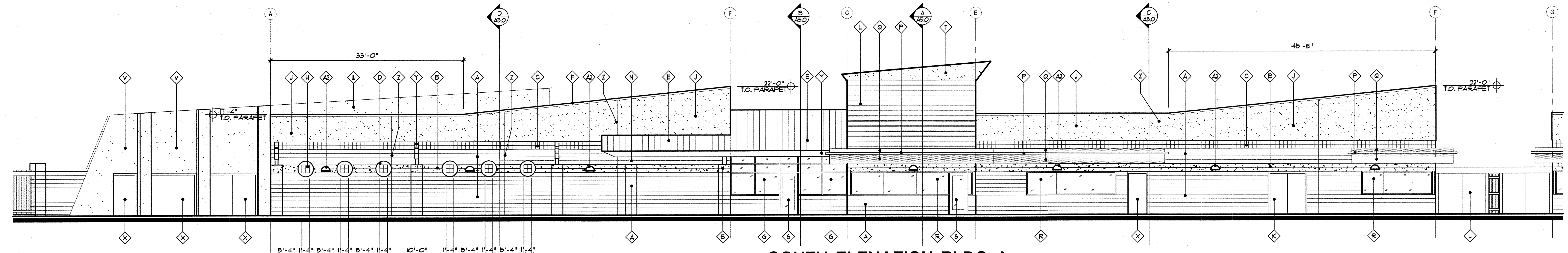
NOTE:
ALL HEIGHTS ARE GIVEN RELATIVE TO FINISH FLOOR OF 0'-0"

COLORS/MATERIALS:

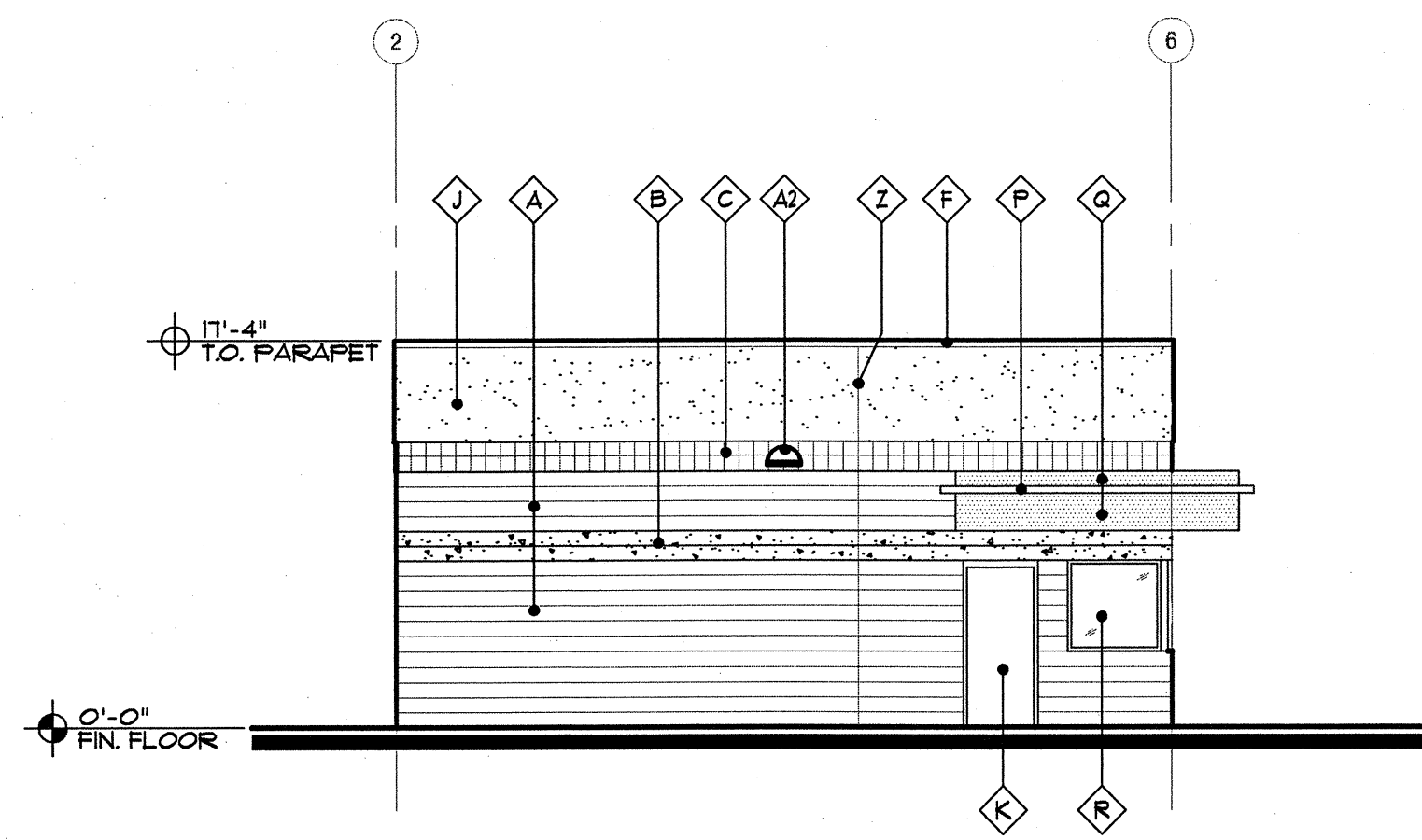
MASONRY	
◊ CMU #1: 8x8x16 SPLIT FACE CMU COLOR: PAINT/STAIN TO MATCH INTEGRAL COLOR CMU "CHARCOAL"	◊ TUBE STEEL FRAME PAINT - COLOR: DE 5030 POMEGRANATE
◊ CMU #2: 8x8x16 GROUND FACE CMU - COLOR: MALIBU SAND	◊ PERFORATED METAL SUN SCREEN POWDER COAT PAINT FINISH COLOR: DE 5416 CANDLE FLAME
◊ CMU #3: 8x8x16 CENTER SCORE CMU COLOR: PAINT/STAIN TO MATCH INTEGRAL COLOR CMU "CHARCOAL"	◊ SILICONE BUTT GLAZED WINDOW SYSTEM WITH INSULATED GLASS
◊ CMU #4: 8x8x16 FLAIN CMU WITH CEMENT PLASTER SMOOTH FINISH - COLOR: DE 5253 THE BLUES	◊ CLEAR ANODIZED ALUMINUM STOREFRONT DOOR SYSTEM
◊ STANDING BEAM METAL ROOF SYSTEM - SATIN FINISH GALVALUME	◊ EIFS CORNICE/CAP - COLOR: DE CANDLE FLAME
◊ GALVANIZED METAL COPING: NO PAINT	◊ HOLLOW METAL DOOR 4 T.S. FRAME, PAINT COLOR: DE 5263 SONORA SHADE
◊ CLEAR ANODIZED ALUMINUM STOREFRONT SYSTEM WITH INSULATED GLASS SYSTEM GLASS COLOR: MATCH LCF "BLUE GREEN"	◊ CEMENT PLASTER FINISH OVER FLAIN CMU SMOOTH FINISH - COLOR: DE 6182 BEAUMONT BROWN
◊ GLASS BLOCK 8"x8"	◊ CEMENT PLASTER FINISH OVER PARTITION STUD WALL
◊ CEMENT PLASTER FINISH OVER FLAIN CMU SMOOTH FINISH - COLOR: DE 5263 SONORA SHADE	◊ HOLLOW METAL DOOR 4 FRAME, PAINT COLOR: DE 5263 SONORA SHADE
◊ HOLLOW METAL DOOR 4 FRAME, PAINT - COLOR: PAINT TO MATCH	◊ TUBE STEEL SHADE STRUCTURE
◊ METAL WALL SYSTEM CENTRIA CS-310 COLOR: MATCH "CENTRIA" AGED COPPER	◊ MASONRY CONTROL JOINT
◊ TUBE STEEL BEAM, PAINT - COLOR: DE 5030 POMEGRANATE	◊ CLEAR ANODIZED ALUMINUM LOUVER
◊ TUBE STEEL COLUMN, PAINT - COLOR: DE 5030 POMEGRANATE	◊ EXTERIOR WALL MOUNTED LIGHT FIXTURE



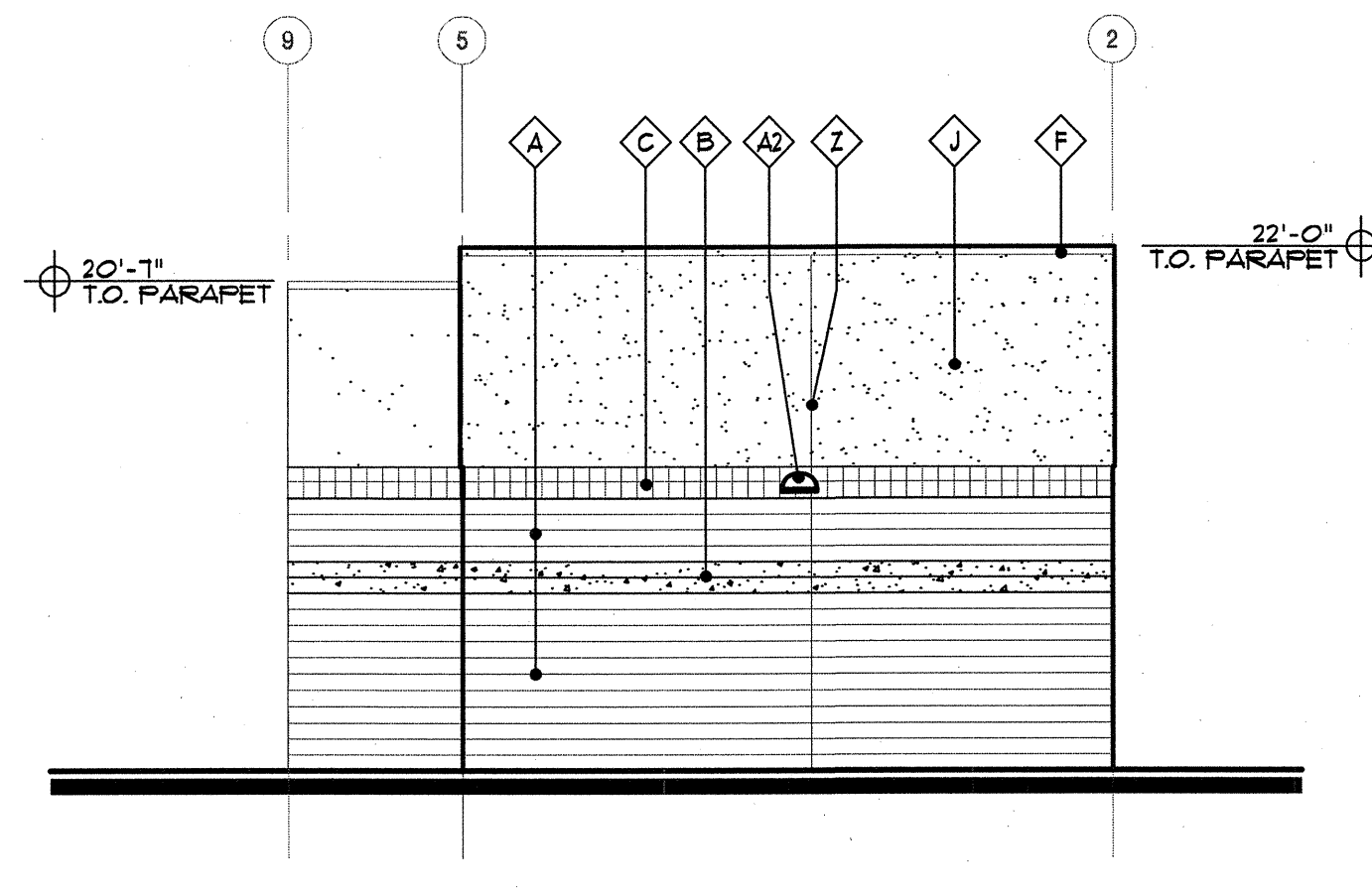
SOUTH ELEVATION BLDG B
SCALE: 1/8" = 1'-0"



SOUTH ELEVATION BLDG A
SCALE: 1/8" = 1'-0"



WEST ELEVATION BLDG B
SCALE: 1/8" = 1'-0"



EAST ELEVATION BLDG B
SCALE: 1/8" = 1'-0"

W:\0826\CDs\A3.2.dwg 05.13.09 12:22pm RWhitbeck

	Saemisch + Di Bella ARCHITECTS, INC. 48 West Main Street Suite 200 Mesa, Arizona 85201 480-655-0633v 480-655-0632f www.sdarch.com	
	SDA JOB NO. 0826	
PRELIMINARY NOT FOR CONSTRUCTION OR RECORDING	CITY OF MESA ENGINEERING DEPARTMENT SKYLINE AQUATIC CENTER 845 South Crismon Road Mesa, Arizona 85205	
	Exterior Elevations	A3.2
DRAWN BY: R. Whitbeck ARCHITECT: V. DiBella APPROVED BY:	SHEET OF	CATALOG NUMBER: A-
348 W.O. 4254 PROJ. NO. 07-0333-001		