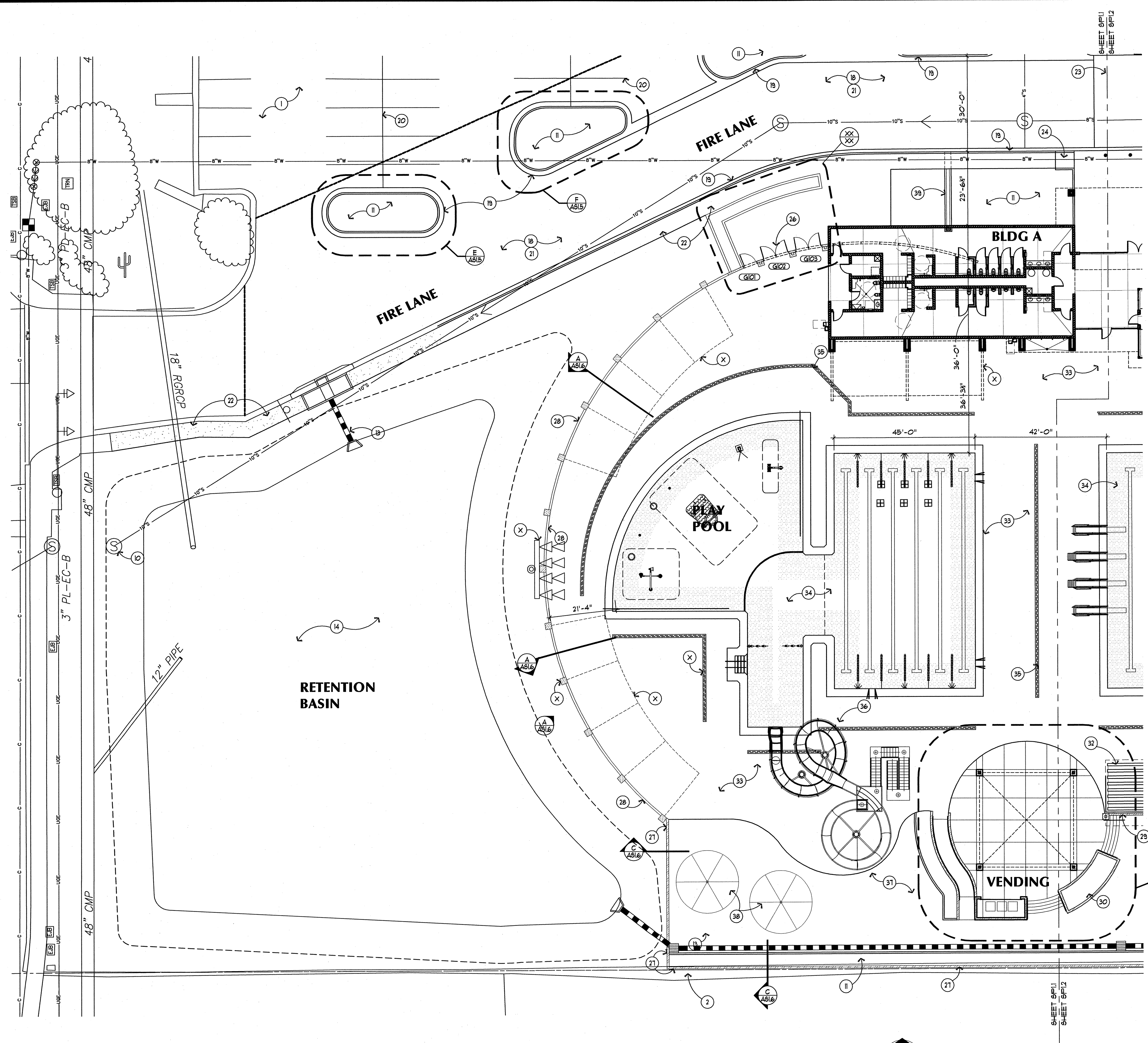


SCALE: 1/16" = 1'-0"



BENCHMARK:  
ELEVATION= (CITY OF MESA DATUM)

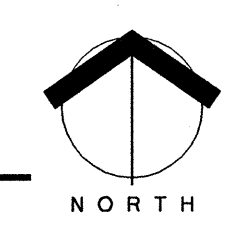


**KEY NOTES**

- 1 EXISTING PARKING AND ASPHALTIC CONCRETE PAVEMENT
- 2 PROPERTY LINE, SEE CIVIL DRAWINGS
- 3 RIGHT-OF-WAY LINE, SEE CIVIL DRAWINGS
- 4 NOT USED
- 5 NOT USED
- 6 DOMESTIC WATER METER LOCATION PER CIVIL, SEE CIVIL DRAWINGS
- 7 IRRIGATION WATER METER LOCATION PER CIVIL, SEE CIVIL DRAWINGS
- 8 BACKFLOW PREVENTER LOCATION PER CIVIL, SEE CIVIL DRAWINGS
- 9 DOMESTIC WATER SERVICE CONNECTION LOCATION, SEE CIVIL AND PLUMBING DRAWINGS
- 10 SEWER SERVICE CONNECTION LOCATION, SEE CIVIL AND PLUMBING DRAWINGS
- 11 LANDSCAPE AREA, SEE LANDSCAPE DRAWINGS
- 12 NOT USED
- 13 UNDERGROUND DRAIN PIPE PER CIVIL, SEE CIVIL DRAWINGS
- 14 RECONFIGURED RETENTION BASIN, SEE CIVIL AND LANDSCAPE DRAWINGS
- 15 NEW CONCRETE HEADWALL, SEE CIVIL DRAWINGS
- 16 NEW DRAINAGE SCUPPER, SEE CIVIL DRAWING
- 17 CONCRETE VALLEY GUTTER, SEE CIVIL DRAWINGS
- 18 NEW ASPHALTIC CONCRETE PAVEMENT OVER PREPARED SUB-GRADE, MATCH EXISTING ADJACENT GRADE, SEE CIVIL DRAWINGS
- 19 NEW C.I.P. CONCRETE CURB AND GUTTER WHERE SHOWN, SEE CIVIL DRAWINGS
- 20 NEW PARKING STRIPING, 4" WIDE WHITE PAINTED STRIPES, TYP.
- 21 FIRE LANE PER CITY OF MESA REQUIREMENTS WITH 55'-0" OUTSIDE TURNING RADIUS AND 35'-0" INSIDE TURNING RADIUS, TYP.
- 22 ADA ACCESSIBLE SIDEWALK, 4" THICK CONCRETE OVER 4" THICK COMPACTED ABC, SCORE AT 5'-0" O.C. U.O.N. PROVIDE EXPANSION JOINT AT 20' O.C. U.O.N.
- 23 ADA ACCESSIBLE CROSSWALK AT MAIN ENTRY, PROVIDE CONCRETE PAVEMENT COMPLIANT WITH ADA CRITERIA, SEE DETAIL -/-
- 24 ADA ACCESSIBLE RAMP, SEE DETAIL AS INDICATED ON PLAN
- 25 CONCRETE SLAB, 4" THICK CONCRETE OVER PREPARED SUBGRADE, FINISHED FINISH
- 26 PAINTED TUBE STEEL MAN GATES, SEE ELEVATION -/-
- 27 SCREEN WALL - 8X8X16 CMU, 8'-0" HIGH FROM NEAREST ADJACENT GRADE WITH OFFSET FOOTING AT PROPERTY LINE AND MCJ'S AT 30'-0" O.C. MAX. SEE ELEVATION -/- AND STRUCTURAL DRAWINGS
- 28 COMBINED RETAINING AND VIEW WALL - 8X8X16 CMU AND TUBE STEEL PANELS, 8'-0" HIGH FROM POOL DECK GRADE WITH MCJ'S AT 30'-0" O.C. MAX. SEE ELEVATION -/- AND STRUCTURAL DRAWINGS
- 29 LOW RETAINING WALL - 8X8X16 CMU, APPROX. 2'-0" HIGH FROM NEAREST ADJACENT GRADE WITH MCJ'S AT 30'-0" O.C. MAX AND 2" DIA. WEEP HOLES AT 2'-8" O.C. HORIZONTALLY. SEE ELEVATION -/- AND STRUCTURAL DRAWINGS
- 30 RAISED PLANTER WITH RETAINING WALL - 8X8X16 CMU, APPROX. 11" HIGH FROM NEAREST ADJACENT GRADE WITH MCJ'S AT 30'-0" O.C. MAX AND 2" DIA. WEEP HOLES AT 2'-8" O.C. HORIZONTALLY. SEE ELEVATION -/- AND STRUCTURAL DRAWINGS
- 31 NEW SITE LIGHTING, LIGHT POLE BASE AND FIXTURE, SEE DETAIL -/-, ELECTRICAL AND STRUCTURAL DRAWINGS
- 32 EIGHT TIER ALUMINUM BLEACHERS, SEE SPECIFICATIONS
- 33 CONCRETE DECK AT POOL AREA, SEE CIVIL SWIMMING POOL CONSULTANT DRAWINGS 4 AS100
- 34 SWIMMING POOL, SEE SWIMMING POOL DRAWINGS SP-010
- 35 TRENCH DRAIN AT POOL DECK, SEE CIVIL DRAWINGS
- 36 POOL SLIDE, SEE SWIMMING POOL DRAWINGS
- 37 TERRACED TURF ACTIVITY AREA, SEE CIVIL AND LANDSCAPE DRAWINGS
- 38 OPERABLE UMBRELLA SHADE CANOPY AT TURF AREA, SEE DETAIL -/-
- 39 CONCRETE SPILLWAY

**PARTIAL SITE PLAN**

SCALE: 1/16" = 1'-0"



|   |   |                               |
|---|---|-------------------------------|
| <p>CALL TWO WORKING DAYS BEFORE YOU SEE BLUE PRINTS CENTER<br/>602-263-1100<br/>OR 811<br/>INSIDE MARICOPA COUNTY</p> | <p><b>Saemisch + Di Bella</b><br/>ARCHITECTS, INC.</p> <p>48 West Main Street Suite 200 Mesa, Arizona 85201<br/>480-655-0633v 480-655-0632f www.sdarich.com</p> |                               |
|   | <p>SDA JOB NO. 0826</p>   |                               |
| <p>PRELIMINARY<br/>NOT FOR<br/>CONSTRUCTION<br/>OR RECORDING</p>  | <p>CITY OF MESA<br/>ENGINEERING DEPARTMENT</p>  |                               |
|   | <p>SKYLINE AQUATIC CENTER<br/>845 South Crisman Road<br/>Mesa, Arizona 85205</p>  |                               |
| <p>DRAWN BY: R. Whitbeck<br/>ARCHITECT: V. DiBella<br/>APPROVED BY:</p>   | <p>Partial<br/>Site Plan</p>  | <p><b>AS1.1</b></p>           |
| <p>340 W.O. 4254<br/>PROJ. NO. 07-0333-001</p>  | <p>SHEET<br/>OF</p>   | <p>CATALOG NUMBER:<br/>A-</p> |

W:\0826\CDS\AS1.1.dwg 05.13.09 12:37pm RWhitbeck