

# Planning & Zoning Interactive Map

THE CITY OF MESA HAS PROVIDED AN INTERACTIVE GIS MAP AVAILABLE TO THE PUBLIC. THIS MAP CAN BE USED TO FIND THE ZONING OF A SITE, RESEARCH THE CASE HISTORY, AND FIND DETAILS ON THE SIZE AND OWNER OF A PROPERTY. THIS GUIDE IS INTENDED TO SHOW HOW TO USE THE MAP FOR YOUR ADVANTAGE.

If researching the case history for a site, please also refer to the *Research Cases Submitted After June 2017* and *Research Cases Submitted Prior to June 2017* Guides.

## 1. Looking Up A Property

---

**STEP 1** – Navigate to [https://gis.mesaaz.gov/Planning\\_Zoning/#](https://gis.mesaaz.gov/Planning_Zoning/#) to view the map. You will be brought to a page with an aerial image of the City of Mesa.

**STEP 2** – In the top right corner select the *Search* tool (Binoculars).



**STEP 3** – You can search by the address, parcel number, or case number. Select which type to search and input the address, parcel number, or case number into the search bar.

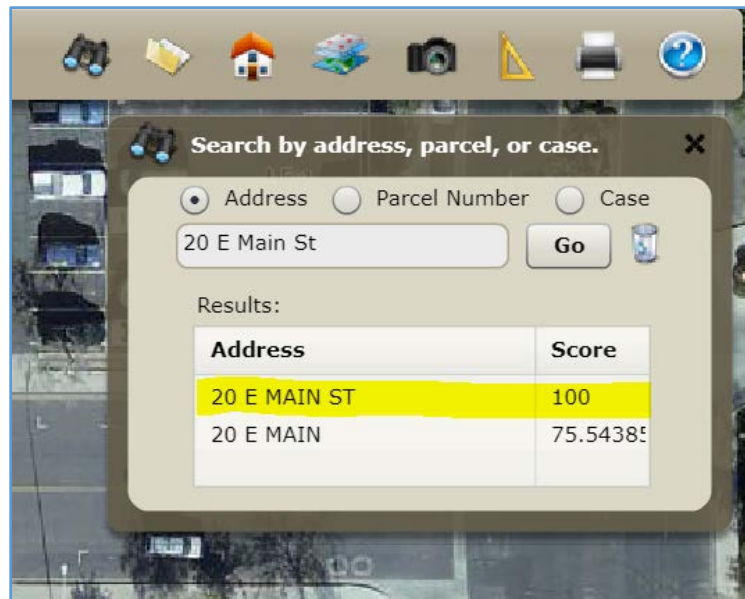


NOTE – If searching using an address, only input the main address line. Do not use suite numbers, city and state, or zip codes.

If searching using the parcel number, input the APN with no dashes or spaces.

**STEP 4** – Select “Go”. The map will move to the general proximity of the site. Use your mouse to scroll-in to zoom in and scroll-down to zoom out.

NOTE – In some cases, multiple addresses will show in the results. Simply double-click on the address with the highest score to be brought to the general proximity of the site. A red flag will show at the address.



## 2. Viewing Details

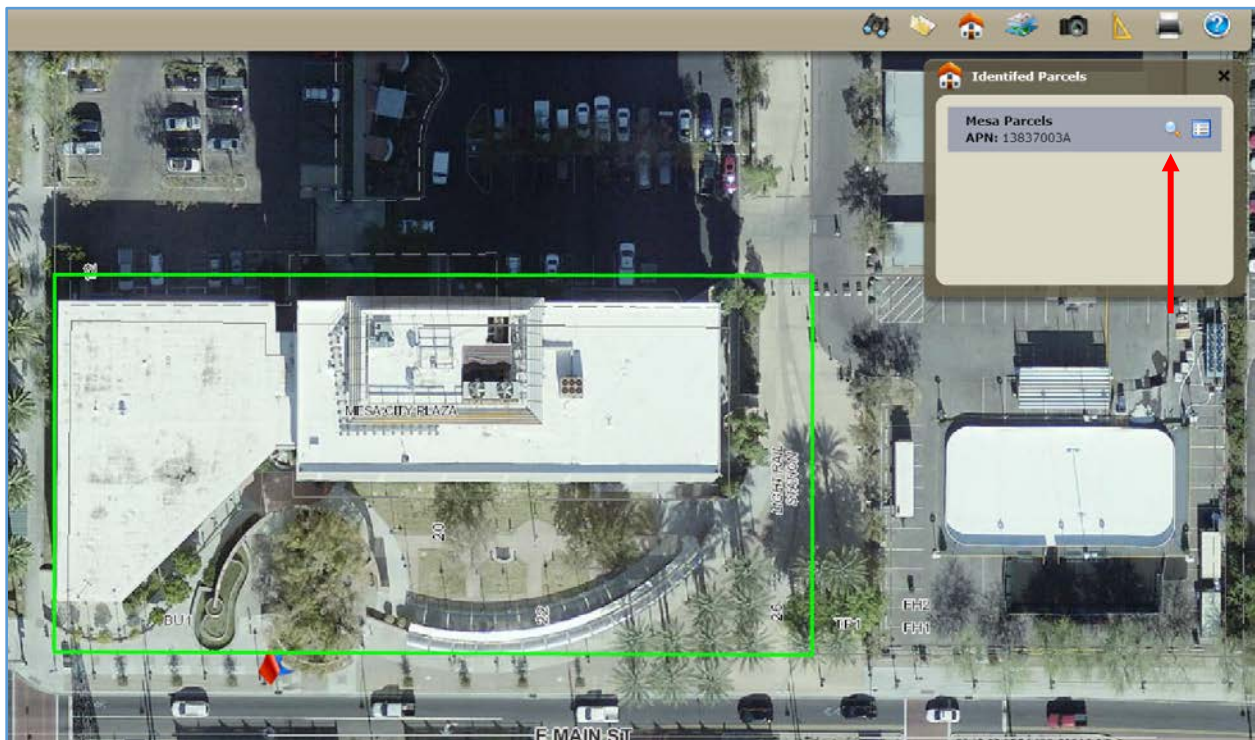
**STEP 5** – In the top right corner, select the *Parcel Detail Tool* (House)



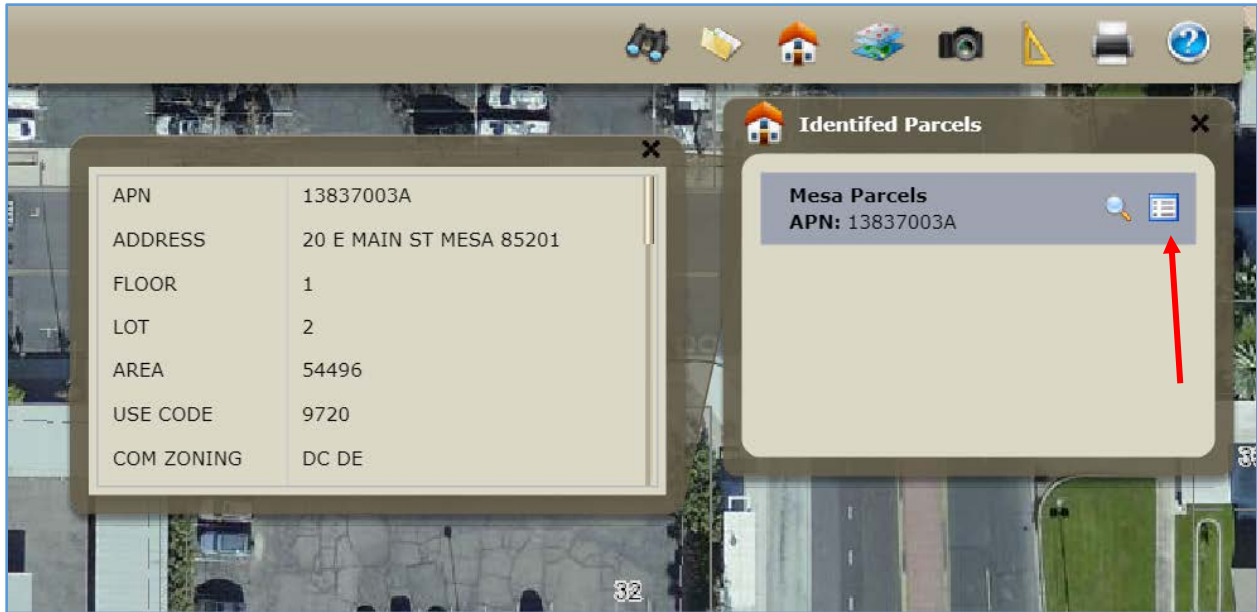
**STEP 6** – Click the *Parcel Detail Tool* on the building or parcel. A new box labeled “Identified Parcels” will open in the top right corner.



**STEP 7** – Select the *Zoom to Feature* (Magnifying Glass) tool to highlight the parcel for a site.

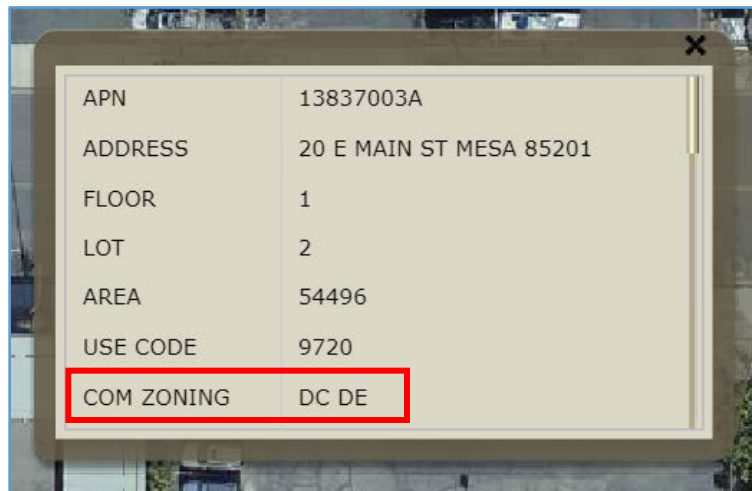


**STEP 8** – Select the *Show Details (Window)* tool to view details about the selected parcel. You can find details on the selected parcel including zoning, owner name, size of the parcel, etc.



### 3. Finding the Zoning

**STEP 9** – Follow steps 1-10. Under the *Show Details* box, scroll down to “COM ZONING” to view the zoning for a parcel.



Please refer to the table below for a key of zoning districts

Zoning	
AG	<a href="#">Agriculture</a>
RS	<a href="#">Single Residence</a>
RSL	<a href="#">Small Lot Single Residence</a>
RM	<a href="#">Multiple Residence</a>

NC	<a href="#">Neighborhood Commercial</a>
LC	<a href="#">Limited Commercial</a>
OC	<a href="#">Office Commercial</a>
GC	<a href="#">General Commercial</a>
MX	<a href="#">Mixed-Use</a>
PEP	<a href="#">Planned Employment Park</a>
LI	<a href="#">Light Industrial</a>
GI	<a href="#">General Industrial</a>
HI	<a href="#">Heavy Industrial</a>
DR	<a href="#">Downtown Residence</a>
DB	<a href="#">Downtown Business</a>
DC	<a href="#">Downtown Core</a>
PS	<a href="#">Public and Semi-Public</a>
ID	<a href="#">Infill District</a>
PAD	<a href="#">Planned Area Development</a>
DE	<a href="#">Downtown Events</a>
CUP	<a href="#">Council Use Permit</a>
SUP	<a href="#">Special Use Permit</a>
BIZ	<a href="#">Bonus Intensity Zone</a>

NOTE – If “COM ZONING” is blank, the property is not within City of Mesa jurisdiction and is likely within Maricopa County.

## 4. Researching the History of a Site

---


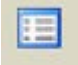
**STEP 10** – Follow steps 1-9.

**STEP 11** – Select the *Case drill down* (Folder) tool in the top right corner.



**STEP 12** – Click the *Case drill down* tool on the building or parcel. A new box labeled *Identified Cases* will open in the top right corner. A list of all cases associated with the site will appear in the box.



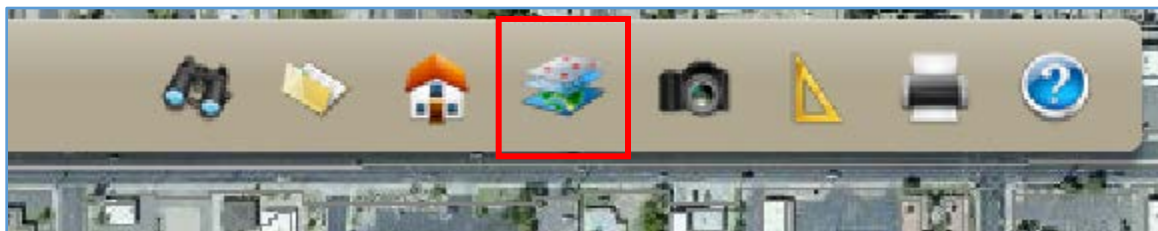
NOTE – You may use the *Zoom to Feature* (Magnifying Glass)  tool to see the location of a case as some cases may contain more than one parcel. Additionally, you can use the *Show Details* (Window)  tool to see a short overview of the case.

If you would like more information about a particular case, you may view the associated documents to the case. Please refer to the *Research Cases Submitted Prior to June 2017* and *Research Cases Submitted After June 2017* guides.

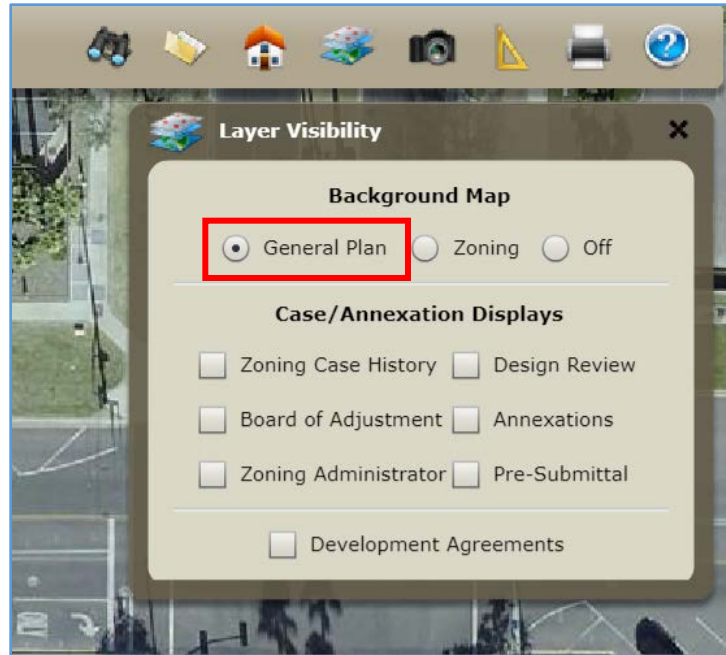
## 4. Finding the General Plan Designation

**STEP 13** – Follow steps 1-4.

**STEP 14** – In the top right corner, select the *Set Visibility of Layers* tool.



**STEP 15** – In the *Layer Visibility* box in the top right corner, select “General Plan”.



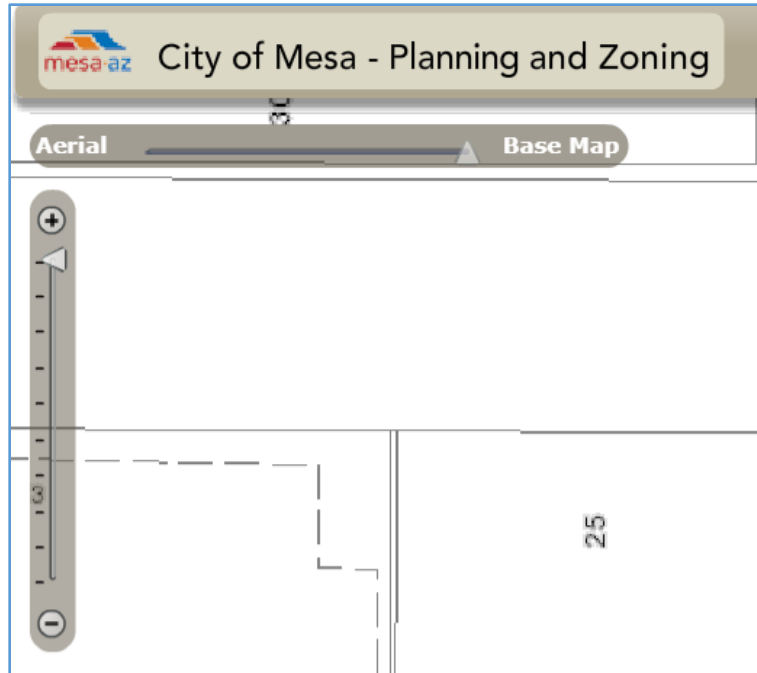
NOTE – To view the “General Plan” layer, you may need to zoom out until you see colors appear over the aerial. The type of General Plan district will appear as well.



## 5. Other Useful Tools

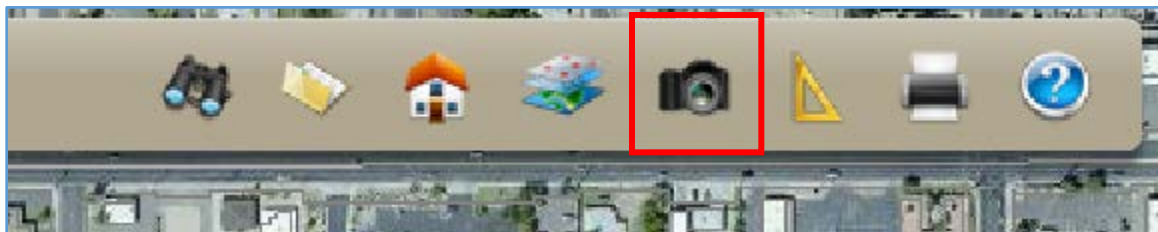
### **Map**

You can change the settings of the map by using the tools in the top left corner.



The *Zoom Bar* allows you to zoom in and out of the map. The *Aerial to Base Map Toggle* allows you to remove the aerial map which can be particularly helpful if you are looking at parcel lines.

**Google Street View (Camera)**



You can use the *Google Street View* image to see the street view image of a site. Simply click the *Camera* on the street in front of the site or building and a new window will open.

NOTE – Google Street View may not work on private streets or gated communities.

**Measure Tool (Ruler)**



The *Measure Tool* can be useful when measuring distances between buildings and property lines, lot depths and widths, etc. The measurements should not be taken exact, only approximations. If you want to know the exact measurement, it is always best to make on-site measurements.