

Southeast Land Use and Transportation Plan

City of Mesa



September 27, 2018

Southeast Mesa Economic Resource Forum



Project Team

Welcome and Introductions

City Project Manager

- Al Zubi, P.E. PTOE, Transportation Department

Project Lead

- Michael Grandy, P.E. Kimley-Horn, Project Manager, Transportation

Project Support

- Felipe Zubia, AICP, Matrix, Land Use
- Jim Rounds, Rounds Consulting, Economics

Agenda

Welcome and Introductions

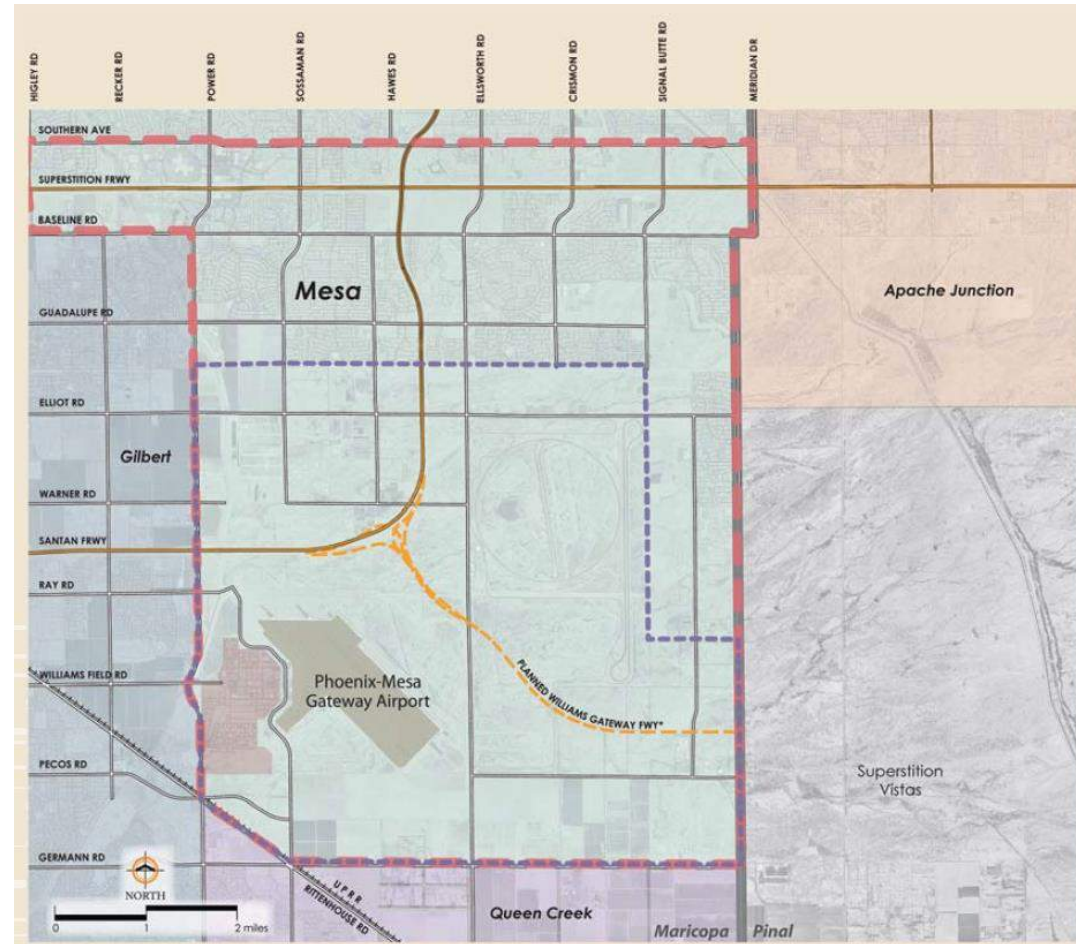
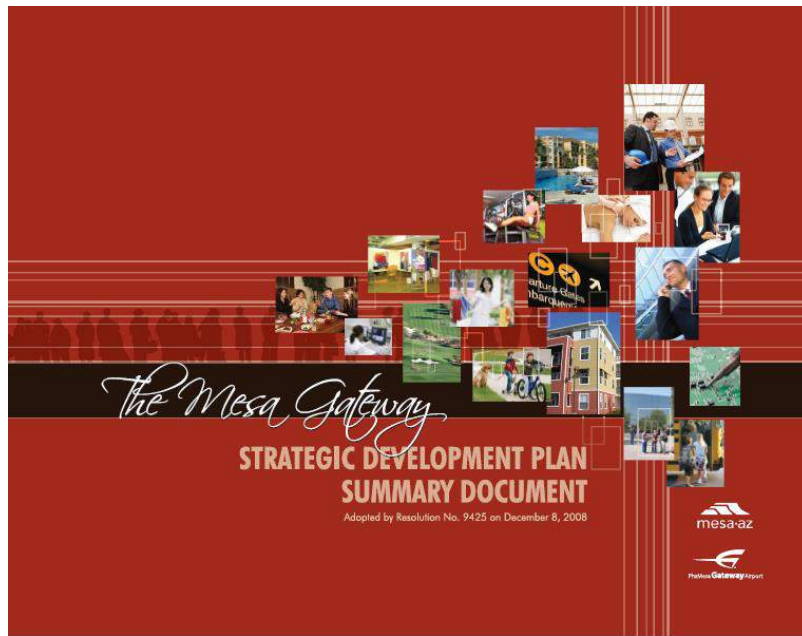
1. Background
2. Project Purpose
 - Scope
 - Schedule
3. Next Steps
 - Stakeholder Interviews
4. Questions and Answers

Background

Prior 2008 Study



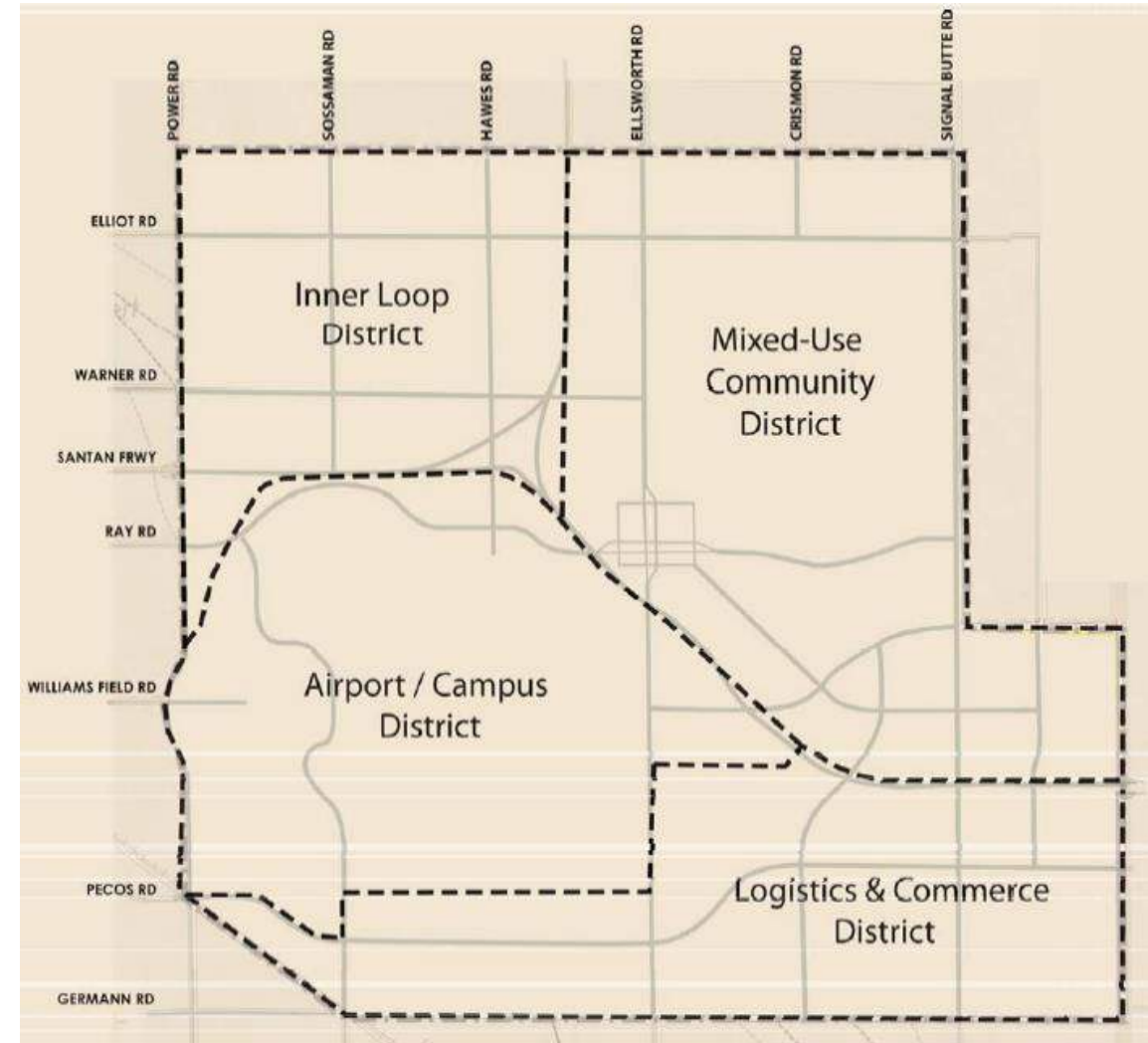
- Mesa Gateway Strategic Development Plan
 - Adopted Dec. 2008



2008 Districts & Target Markets



- Sub-area Districts in Less-Developed Southern Part of Study Area
 - Inner Loop
 - Mixed Use
 - Airport/Campus
 - Logistics & Commerce
- Identified Target Markets
 - Aerospace
 - Airline Services
 - High Tech
 - Healthcare

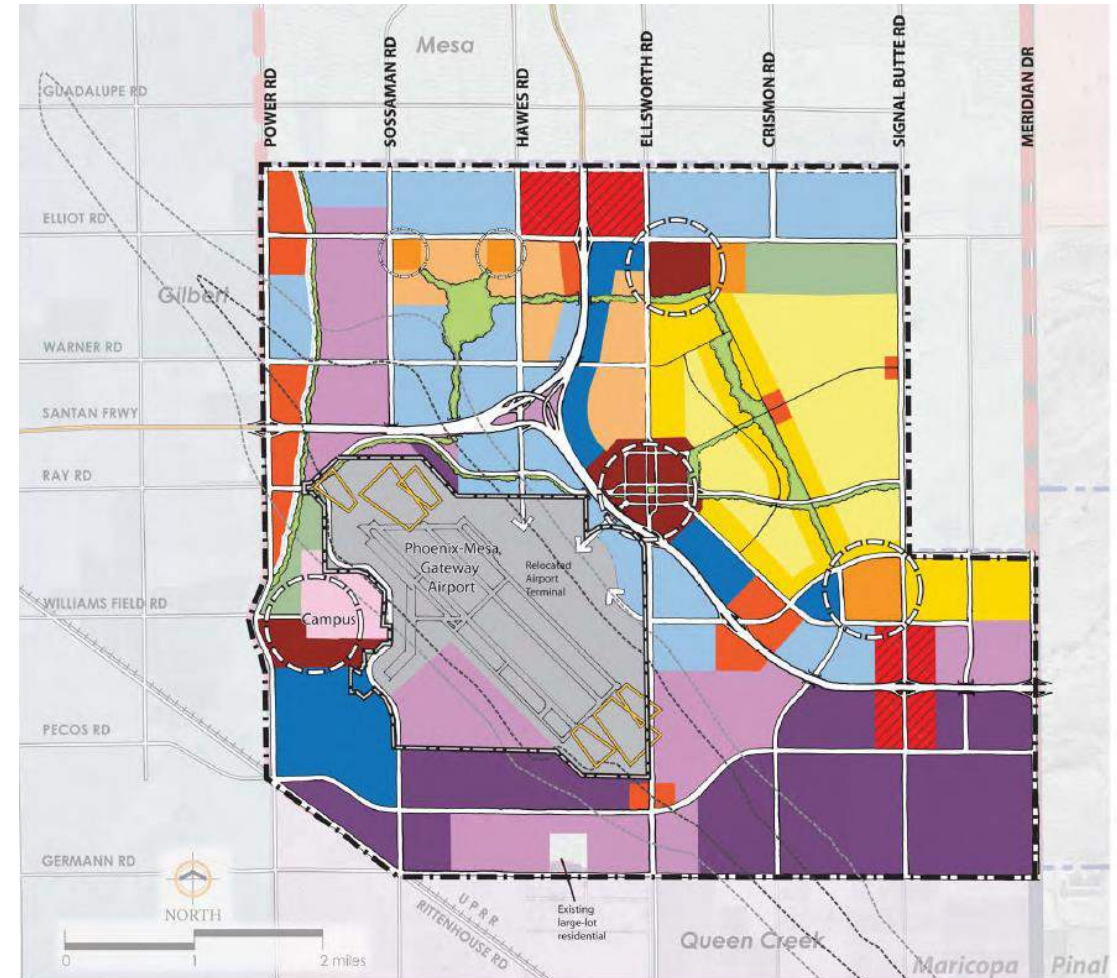


2008 Preferred Concept Land Uses



■ Identified Land Use Assumptions

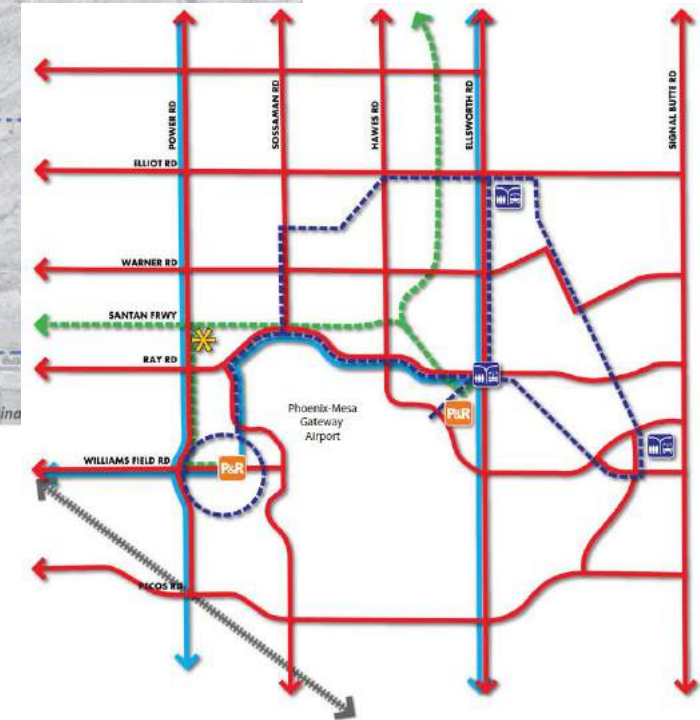
- Industrial South of Airport
- Intense Land Uses along SR 24
- Mixed Use Centers



2008 Transportation Strategies



- Identified Transportation Strategies
 - High Capacity Boulevards
 - Connector Roads
 - Transit
 - Shared Use Paths
 - Bike Lanes
 - Potential Future Commuter Rail

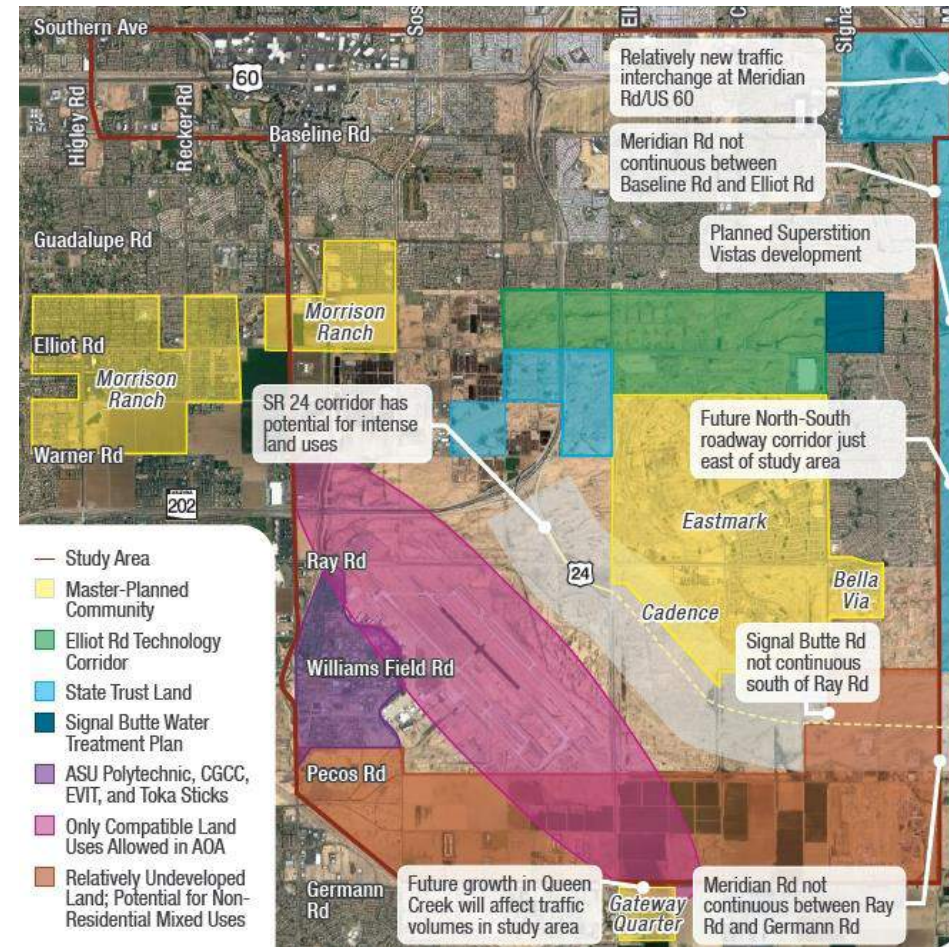


Project Purpose

Need for Southeast Mesa LUTP



- **Land Development**
 - Few Remaining Large Undeveloped Parcels
 - Changing Markets & Trends
 - Updated Land Use Assumptions
- **Road Project Prioritization**
 - SR 24 Extension
 - Which Roads to Build First?
 - How Many Lanes are Needed?





- **Existing Conditions Update**
 - Market Analysis
 - Land Use Update
 - Transportation Update
- **Public Engagement**
 - Community Involvement Plan
 - Stakeholders
 - Workshops
 - Council, Committee Board updates
- **Plan Updates**
 - Vision, Goals, and Policies
 - Infrastructure Programming and Prioritization

Community Involvement Plan



Schedule



- Public Engagement
 - Beginning September 2018
- Land Use and Economic Development Strategies Update
 - Complete December 2018
- Transportation Master Plan Update
 - Complete April 2019
- Final Deliverable
 - June 2019



Next Steps

Stakeholder Interviews



- Week of October 8

Mesa SE LUTP Stakeholder Interview Schedule					
	Mon - Oct. 8	Tue - Oct. 9	Wed - Oct. 10	Thu - Oct. 11	Fri - Oct. 12
7 am					
:30					
8 am	Group / Stakeholder	Group / Stakeholder	Group / Stakeholder		
:15					
:30					
:45					
9 am					
:15					
:30			Group / Stakeholder		
:45					
10 am					
:15					
:30					
:45					
11 am	Group / Stakeholder	Group / Stakeholder	Group / Stakeholder		
:15					
:30					
:45					
12 pm	LUNCH	LUNCH	LUNCH	LUNCH	LUNCH
:15					
:30					
:45					
1 pm	Group / Stakeholder	Group / Stakeholder			
:15					
:30					
:45					
2 pm					
:15					
:30		Group / Stakeholder			
:45					
3 pm					
:15					
:30					
:45					
4 pm		Group / Stakeholder			
:15					
:30					
:45					
5 pm					
:15					
:30					
:45					



Questions?